

# Types VIZ-75 and VIZ-11 Indoor voltage transformers

## Product features

- 8.3 and 15 kV indoor
- 75 and 110 kV BIL, 60 Hertz
- Primary volts: 2400 - 14400
- UL Recognized Components, File No. E148620

## Application

The VIZ-75 and VIZ-11 indoor voltage transformers are designed for service in metalclad switchgear and are used for metering, relaying, or control power. Both units are available in single, double, and tapped secondary designs with two accuracy and thermal rating options.

## Construction features

The primary and secondary coils are wound using special winding and shielding techniques for improved voltage stress distribution. The coils are designed to withstand continuous operation at either 1.1 or 1.25 times the line-to-line voltage level for Z burden units and 1.9 times the line-to-ground voltage level for Y burden units.

Each coil is insulated with mylar film to provide a high dielectric strength between layers. The coils and core are combined to create a complete winding structure that is assembled to a support frame. The entire assembly is vacuum cast in polyurethane for added insulation and protection.

## Fuse classifications

These units are provided with three fuse classifications: mounted fuse with hardware, unfused with hardware, or unfused without hardware. Optional fuse kits are offered to convert unfused styles to fused styles.

## Mounting

The VIZ-75 and VIZ-11 can be mounted in upright, cantilever, or upside-down positions.

## Test reports

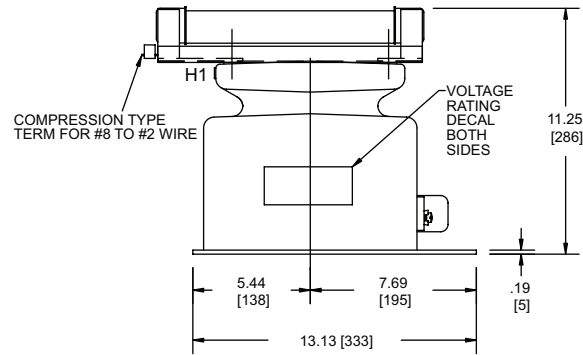
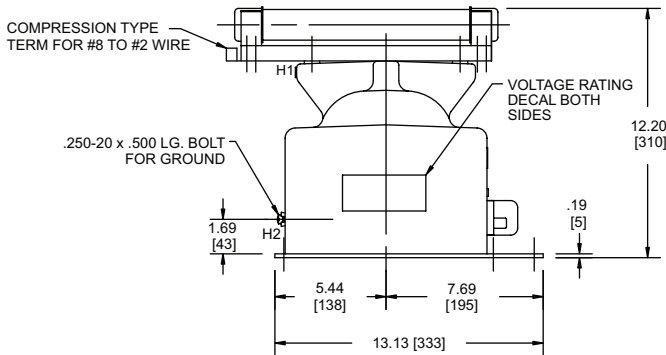
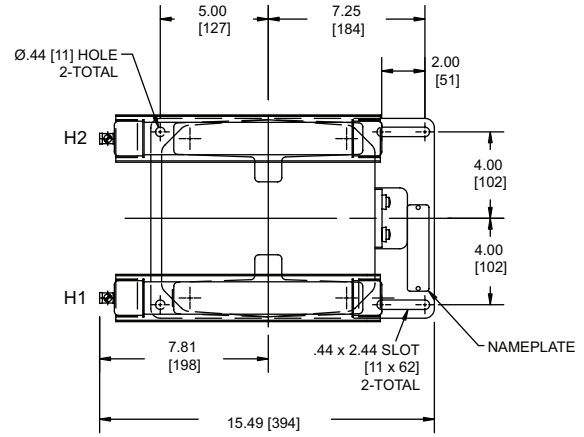
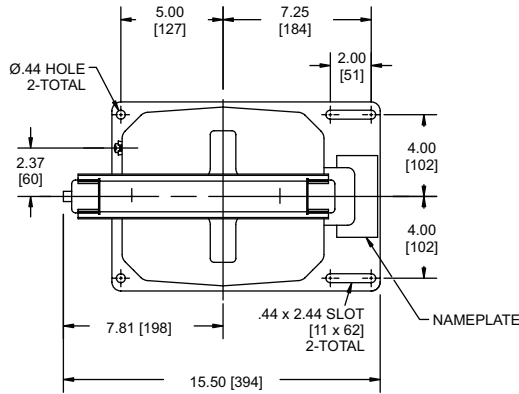
IEEE test reports are stored electronically and can be e-mailed in various formats at the time of shipment.

## Standards

These units meet all applicable IEEE and NEMA standards and are UL Recognized Components.

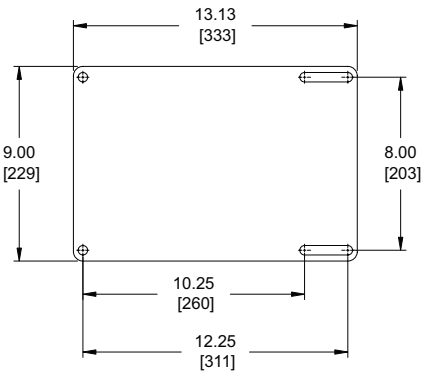
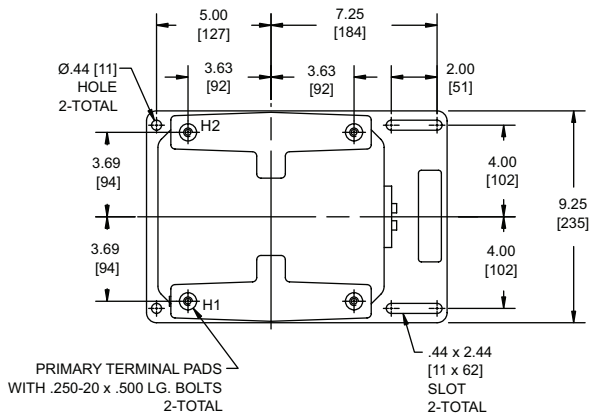


## Unit dimensions

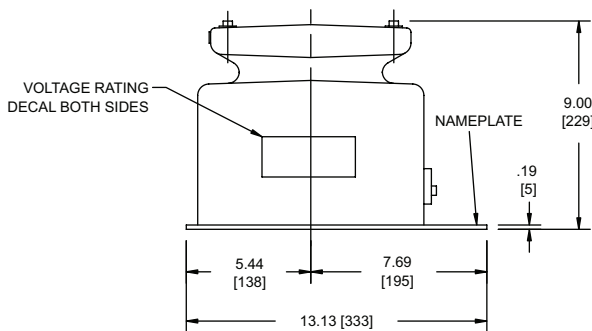


Fused (one fuse), approximate weight 67 lbs.

Fused (two fuses), approximate weight 69 lbs.



Baseplate dimensions



Unfused, approximate weight 65 lbs.

### Optional accessories

Fuse kits to convert unfused VIZ-75 or VIZ-11 to fused style:

- For line-to line units:  
Fuse kit (two fuses and hardware) 7527A98G01
- For line-to ground units:  
Fuse kit (one fuse and hardware) 7527A98G02

Replacement fuses:

- CLE-PT, 0.5, 15.5 kV: 50C5225G03
- CLE-PT, 1.0, 15.5 kV: 50C5225G08

Selection guide for line-to-line units

Primary voltage	Secondary voltage	Winding ratio	Rated voltage factor	Frequency	Style number		
					Unfused with no provision for fuse mounting	Two fuses	Unfused with provision for fuse mounting
<b>VIZ-75 line-to-line</b>							
2400/4160Y	120	20:1	1.1	60	7525A66G01	7525A67G01	7525A70G01
4200/7280Y	120	35:1	1.1	60	7525A66G02	7525A67G02	7525A70G02
4800/8320Y	120	40:1	1.1	60	7525A66G03	7525A67G03	7525A70G03
7200/7200Y	120	60:1	1.1	60	7525A66G04	7525A67G04	7525A70G04
7200/7200Y	120	60:1	1.1	50	-	7525A67G18	7525A70G18
<b>VIZ-11 line-to-line</b>							
7200/12470Y	120	60:1	1.1	60	7525A66G05	7525A67G05	7525A70G05
7620/13200Y	120	63.5:1	1.1	60	7525A66G06	7525A67G06	7525A70G06
8400/14560Y	120	70:1	1.1	60	7525A66G07	7525A67G07	7525A70G07
12000/12000Y	120	100:1	1.1	60	7525A66G08	7525A67G08	7525A70G08
13200/13200Y	120	110:1	1.1	60	7525A66G09	7525A67G09	7525A70G09
14400/14400Y	120	120:1	1.1	60	7525A66G10	7525A67G10	7525A70G10
11000/11000Y	110	100:1	1.1	50	-	7525A67G11	-
2400/4160Y	120	20:1	1.1	60	-	7525A67G17	7525A70G17
12000/12000Y	120	100:1	1.1	50	7525A66G13	7525A67G15	7525A70G15
14400/14400Y	120	120:1	1.1	50	-	7525A67G34	7525A70G14
12470/12470Y	120	103.9:1	1.1	60	7525A66G15	7525A67G38	7525A70G27
13800/13800Y	120	115:1	1.1	60	-	7525A67G43	7525A70G37
13800/13800Y	115	120:1	1.1	60	7525A66G11	7525A67G58	-
10000/10000Y	120	83.33:1	1.1	60	-	7525A67G35	7525A70G28

Selection guide for line-to-ground units

Primary voltage	Secondary voltage	Winding ratio	Rated voltage factor	Frequency	Style number	
					One fuse	Unfused with provision for fuse mounting
<b>VIZ-75 line-to-ground</b>						
2400/4160GY	120	20:1	1.1	60	7525A68G01	7525A71G01
4200/7280GY	120	35:1	1.1	50	7525A68G26	-
4200/7280GY	120	35:1	1.1	60	7525A68G02	7525A71G02
7200/7200GY	120	60:1	1.1	50	7525A68G34	-
4800/8320GY	120	40:1	1.1	60	7525A68G03	7525A71G03
7200/7200GY	120	60:1	1.1	60	7525A68G04	7525A71G04
<b>VIZ-11 line-to-ground</b>						
14400/14400GY	120	120:1	1.1	50	7525A68G14	7525A71G15
14400/14400GY	120	120:1	1.1	60	7525A68G10	7525A71G10
8400/14560GY	120	70:1	1.1	50	7525A68G15	7525A71G18
15000/15000GY	120	125:1	1.1	60	7525A68G21	-
4200/7280GY	120	35:1	1.1	60	7525A68G31	-
10000/10000GY	120	83.33:1	1.1	60	7525A68G36	-
10000/10000GY	120	83.33:1	1.1	50	7525A68G37	-
11000/11000GY	120	91.67:1	1.1	50	7525A68G42	-
13800/13800GY	115	120:1	1.1	60	7525A68G44	-
7620/13200GY	208.75	63.5:1	1.1	60	7525A68G50	-
2400/4160GY	120	20:1	1.1	60	7525A68G55	-
13800/13800GY	120	115:1	1.1	60	7525A68G61	-
7200/12470GY	120	60:1	1.1	60	7525A68G05	7525A71G05
7620/13200GY	120	63.5:1	1.1	60	7525A68G06	7525A71G06
8400/14560GY	120	70:1	1.1	60	7525A68G07	7525A71G07
12000/12000GY	120	100:1	1.1	60	7525A68G08	7525A71G08
13200/13200GY	120	110:1	1.1	60	7525A68G09	7525A71G09
7200/12470GY	120	60:1	1.1	50	7525A68G63	7525A71G12
12000/12000GY	120	100:1	1.1	50	7525A68G17	7525A71G13

Additional styles available upon request. Contact your ABB sales representative or call +1-252-827-3212 for more information.

For more information please contact:

**ABB Inc.**

**Medium Voltage Distribution Components**

3022 NC 43 North

Pinetops, NC 27864

USA

Phone: +1 252 827 3212

Fax: +1 252 827 4286

[www.abb.com/mediumvoltage](http://www.abb.com/mediumvoltage)

**Note:**

We reserve the right to make technical changes or modify the contents of this document without prior notice. With regard to purchase orders, the agreed particulars shall prevail. ABB does not accept any responsibility whatsoever for potential errors or possible lack of information in this document. We reserve all rights in this document and in the subject matter and illustrations contained therein. Any reproduction—in whole or in parts—is forbidden without ABB's prior written consent.

Copyright 2005 ABB.

All rights reserved.



UL Recognized Component, File No. E148620