

NEW

C192PF8

Power Factor Manager

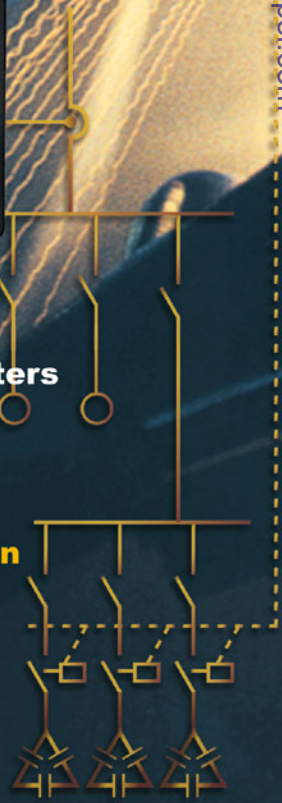


Provided by Northeast Power Systems, Inc
www.nepsi.com

**Introducing the new line of
Power Factor Controllers and Powermeters**

- **Dual power factor**
- **Controls up to 8 capacitor banks**
- **Phase failure protection**
- **Harmonic and low voltage protection**
- **Multi-purpose switches**

SATEC
Powerful Solutions



NEW

C192PF8



Class 0.5 Accuracy

- Bright LED displays (three windows, up to 45 pages) with adjustable display update time and automatic scrolling
- Percent load LED bar graph
- Alarm LED indicator (setpoint programmable)
- Communication LED indicators
- 8 programmable relays for alarm / setpoint / energy pulsing
- 16 programmable setups for alarm / control / trip functions
- Failsafe relay operation
- Digital input for status or external synchronization
- 4 counters operated and released by user-defined triggers
- RS-485 communications (RS-232 optional), ASCII/Modbus protocols, assignable registers
- Optically isolated programmable analog output 0-20 mA / 4-20 mA (option)
- Demands: predicted, sliding, accumulated, maximum
- Energies: import, export, net (active and reactive energy)
- Compact size: 144 x 144 mm.

Parameter	Reading%	Full Scale%
Voltage		0.3
Line current		0.3
Active power		0.4
Reactive power		0.4
Apparent power		0.4
Power factor		1
Frequency	0.02	
Neutral (unbalanced) current		0.6
Ampere demand		0.3
kW demand	same as for kW	
kVA demand	same as for kVA	
Active energy import & export	same as for power	
Reactive energy import & export	same as for power	
Apparent energy	same as for power	

Measurement error is typically much less than the maximum error specified here.



Ordering Information

C192PF8- [] - [] - [] - [] - []

Voltage Inputs
 0* 690V AC Nominal Voltage Input
 U 120V AC Nominal Voltage Input

Current Inputs
 1 1 Ampere
 5* 5 Ampere

Power Supply
 ACDC* 90 - 264V AC and 85 - 290V DC
 1DC 10 - 20V DC
 2DC 20 - 38V DC
 3DC 38 - 72V DC

Communication
 0* RS-485
 R2 RS-232

Programmable Analog Output
 0 No Analog Output
 A2 0 - 20 mA
 A4 4 - 20 mA

* Standard
 Example: C192PF8-0-5-ACDC-0-A2

SATEC, Ltd.

Har Chotzvim Science Based Industrial Park
 P.O.Box 45022, Jerusalem, 91450 Israel
 Tel.: 972-2-541-1000 Fax: 972-2-581-2371
 e-mail: satec@satec.co.il www.satec.co.il

SATEC, Inc.

One Springfield Ave., Summit, NJ 07901
 Tel: (908) 608-0500 Fax: (908) 608-0535
 e-mail: satec@oksatec.com www.oksatec.com

Distributor



Provided by Northeast Power Systems, Inc.
www.nepsi.com